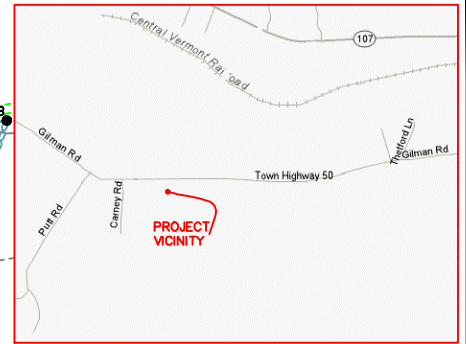
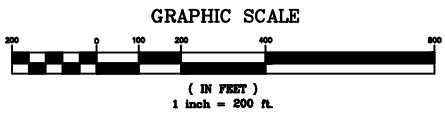
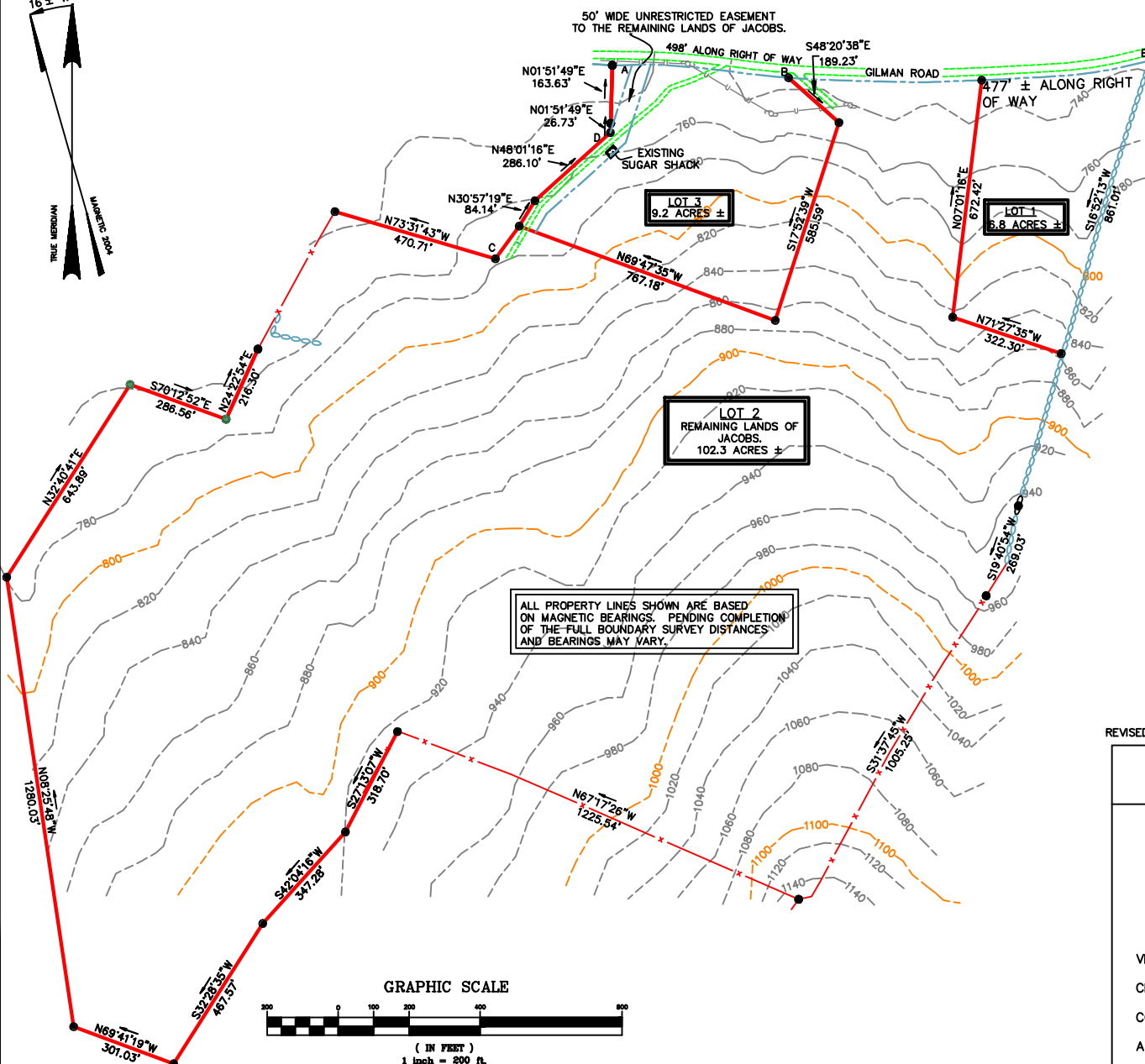


THIS PLAT CONFORMS TO VSA TITLE 27 SECTION 1403.



LOCATION MAP  
(NOT TO SCALE)

TIE LINES: ROD TO ROD  
A - B: N 89° 33' 22" E, 1512.84'  
C - D: N 42° 49' 43" E, 458.15'

LEGEND	
●	IRON ROD FOUND
●	IRON ROD SET
○	UTILITY POLE
⊗	STONE WALL
—X—	BARBED WIRE FENCE LINE
—	EDGE OF TRAVELED WAY
—	OVERHEAD UTILITY LINE
—	RIGHT OF WAY
—	PROPERTY LINE

REVISED: CHANGED RIGHT OF WAY LOCATION ON LOT 3. 12/02/04 - BMW

PROPERTY SUBDIVISION SURVEY IN  
ROYALTON, VERMONT FOR  
**RITA JACOBS**



**AMERICAN SURVEY COMPANY**  
"SURVEYING, MONUMENTING, AND MAPPING  
THE LANDS OF AMERICA"

VERMONT OFFICE: WILLIAMSTOWN, VT  
CHIEF OF PARTY: J. DIEBOLD  
COMPILED: OCTOBER 06, 2004  
APPROVED:

*Robert J. Townsend*

04030SURV