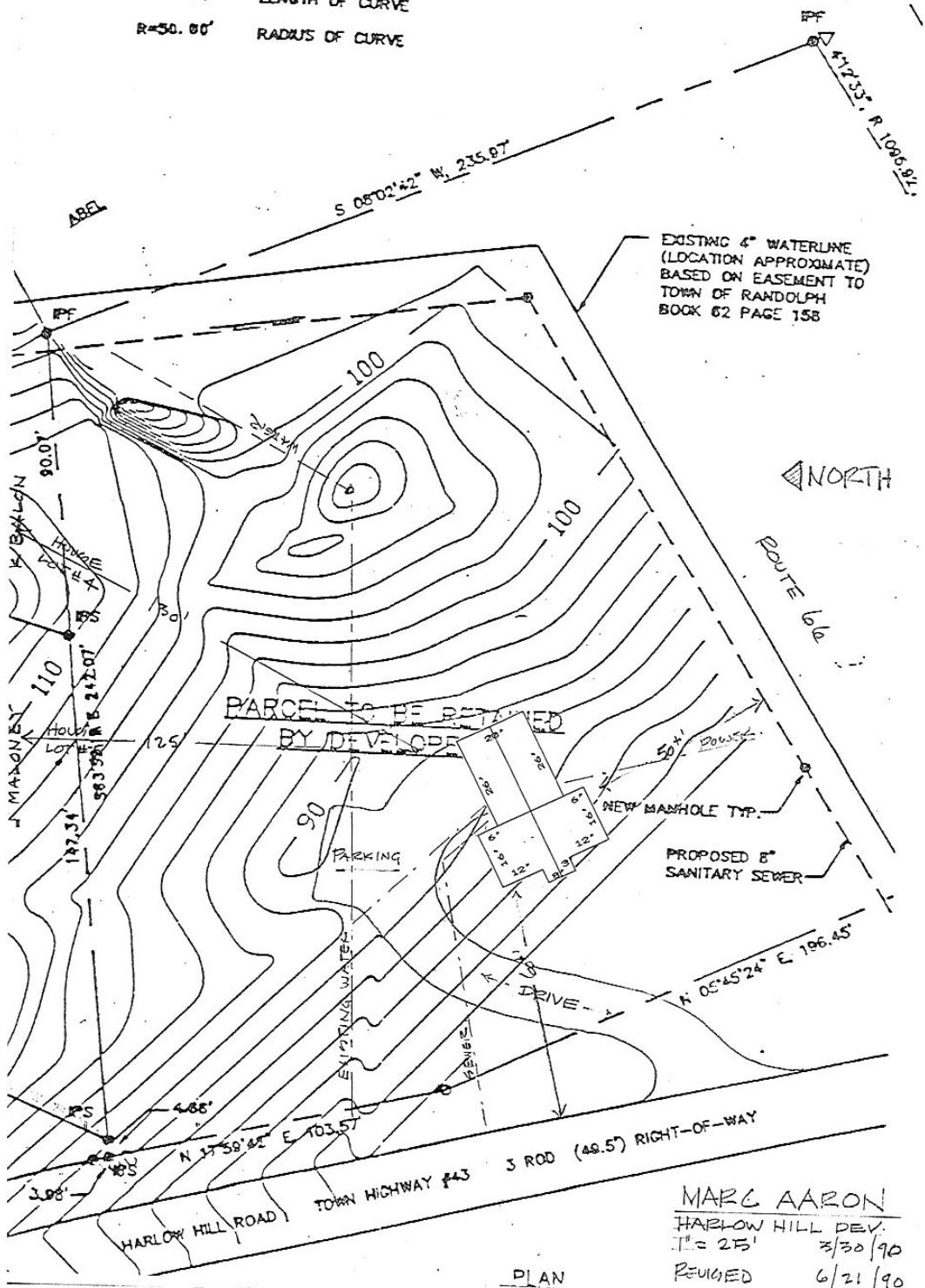
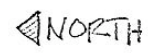


$\Delta 68^{\circ}13'54''$  CENTRAL ANGLE OF CURVE  
 $L=59.54'$  LENGTH OF CURVE  
 $R=50.00'$  RADIUS OF CURVE



EXISTING 4" WATERLINE  
 (LOCATION APPROXIMATE)  
 BASED ON EASEMENT TO  
 TOWN OF RANDOLPH  
 BOOK 62 PAGE 158



MARC AARON  
 HARLOW HILL DEV.  
 IT# = 2751 3/30/90  
 REVISED 6/21/90

PLAN